

LUKA KOPER – PORT OF KOPER

Central Europe via Slovenia > SHORTER > SMARTER > PARTNER



MULTI-PURPOSE PORT



CONTAINERS

The largest terminal in the Adriatic



CARS AND RO-RO

Among top terminals in the Med



BREAK BULK

Diversity of products is the motto



PERISHABLES

Over 50 years of experience



COAL AND IRON ORE

Gateway for power and steel industry supply



PROJECT CARGOES

Big cranes and experienced staff



ALUMINA AND OTHER MINERALS

Specific facilities for raw materials



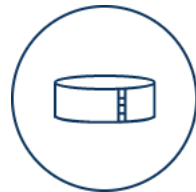
TIMBER

Top timber terminal in the region



LIVESTOCK

Export and staging point for cattle and sheep



LIQUID BULK

Handling fuels, chemicals and vegetable oils



CEREALS AND FODDER

Grains, seeds, soya and other agro-food products



PASSENGERS

Terminal located just 200 m from old city center

TERMINAL AREAS

282 ha total port area
3.300 m quayside
26 berths
10 – 18 m sea depth

CONTAINER

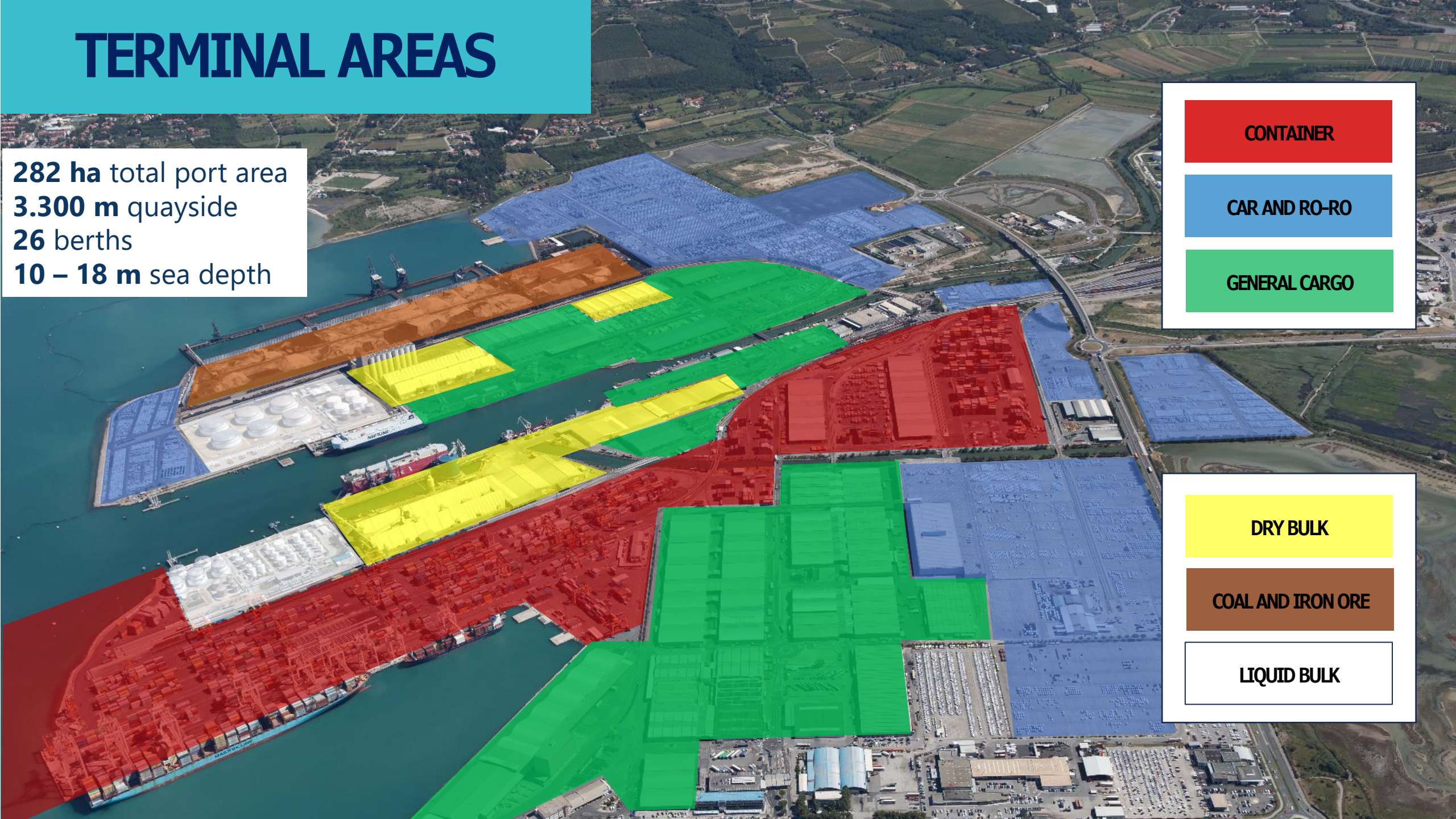
CAR AND RO-RO

GENERAL CARGO

DRY BULK

COAL AND IRON ORE

LIQUID BULK



MARITIME THROUGHPUT 2023



Total throughput

22.267.525
tons

- 4 %
2022/23



1.066.093 TEU

+ 5 %
2023/22



916.728 units

+ 14 %
2023/22



1.109.898 tons

- 15 %
2023/22



5.289.610 tons

- 15 %
2023/22



4.498.697 tons

- 3 %
2023/22



DEVELOPING EFFICIENT AND COMPETITIVE CONTAINER RAILWAY SERVICES

BLOCK CONTAINER TRAINS:

22-24 TRAINS/DAILY (AVERAGE 2023)

NEW CAPACITY ON THE TERMINAL: 30-32

TRAINS/DAILY

CONTAINER TERMINAL MODAL SPLIT



44 % RAIL (2023)



56 % ROAD (2023)

TRANSHIPMENT 2%

REGULAR INTERMODAL RAILWAY CONTAINER SERVICES:

Slovenia – up to 14x

Hungary – up to 23x

Austria – up to 22x

Czechia – up to 21x

Slovakia – up to 29x

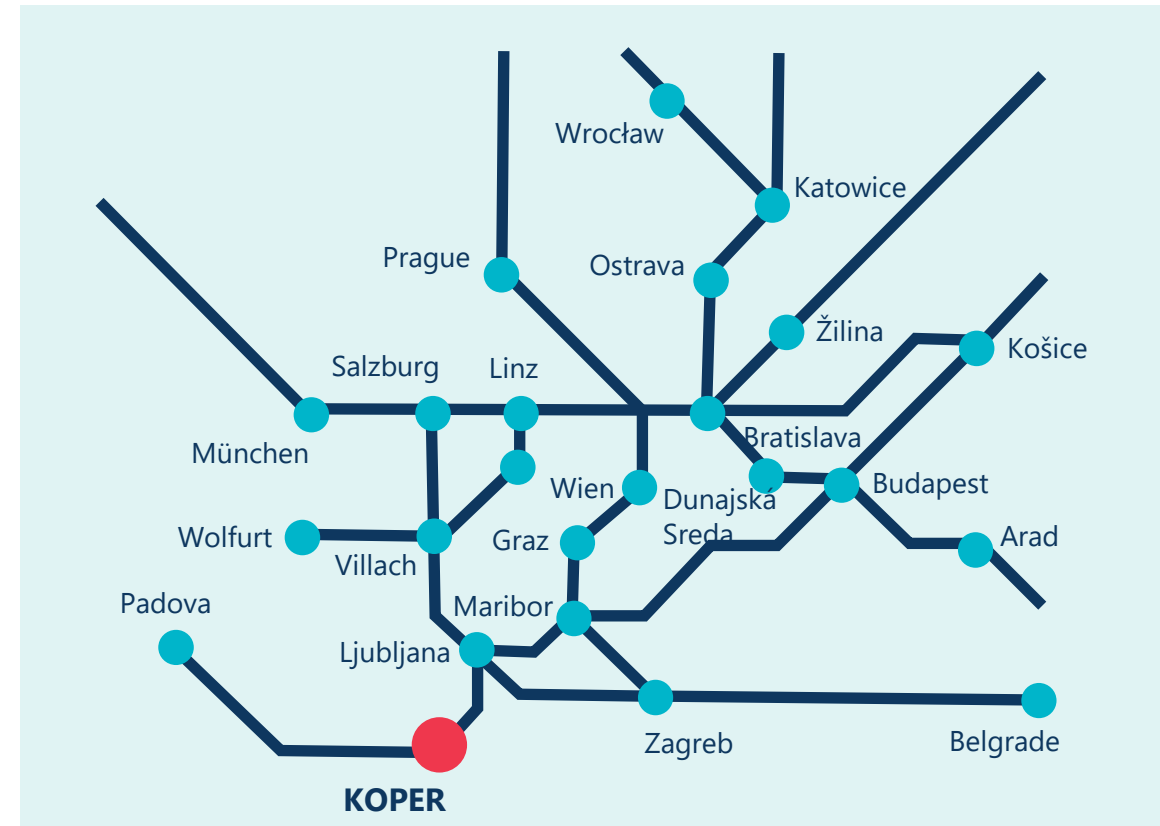
Poland – up to 11x

Romania – up to 3x

Croatia – up to 5x

Serbia – up to 3x

*Based on weekly service



WORKS ON THE NEW DIVAČA - KOPER RAILWAY LINE



- 27,1 km total length
- 75% (20,5km) inside 8 tunnels
- 430 m altitude difference
- estimated time of completion: end of 2025
- fully operative: beginning of 2026



160 km/h

maksimalna hitrost potniških vlakov



17 min

potovalni čas zdaj **45 min**

120 km/h

maksimalna hitrost tovornih vlakov



25–35 min

potovalni čas zdaj **110 min**

90



212

povečanje število vlakov

12,7
mio ton



36,9

mio ton



RAIL vs ROAD

WITH THE 2nd RAILSTRACK THE
THROUGHPUT IN PORT CAN INCREASE FOR
24 MIO TONS (DOUBBLE)



EQUIVALENT TO 600.000 - 800.000 TRUCKS
LESS ON THE ROAD

TRANSPORT KONTEJNERJEV

76
KONTEJNERJEV



VLAK

1
KONTEJNER



TOVORNJAK

TRANSPORT AVTOMOBILOV

280
AVTOMOBILOV



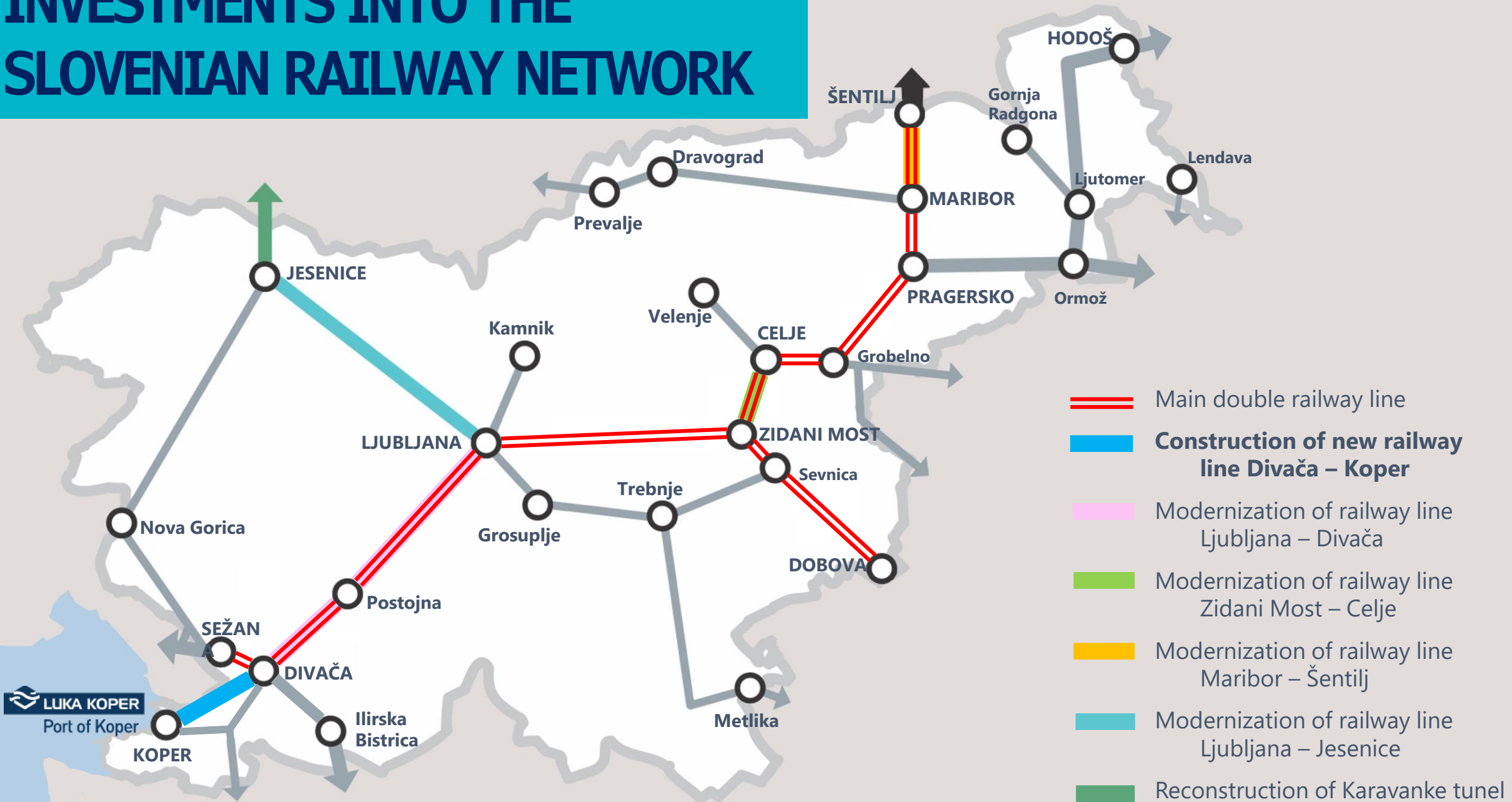
VLAK

8
AVTOMOBILOV



TOVORNJAK

INVESTMENTS INTO THE SLOVENIAN RAILWAY NETWORK



FUTURE INVESTMENTS ON THE CONTAINER TERMINAL

Reconstruction of Berth 7

Extension of the northern part of Pier I and adjacent stacking areas

- 340 m of quay side,
- 2 berths
- 2 mother vessels simultaneously
- 3 additional super post-panamax STS cranes
- 2 additional railway tracks of 700m each
- 60 thousand m² of storage areas,
- annual capacity up to 1.75 million TEU



ROUTING OPTIMIZATION FOR A GREENER TRANSPORT

Koper vs N Europe by sea. Comparison of CO2 emissions: transport of one 40' container (20 tons) from Port Said





Feel free to reach out!

Igor Pamič

igor.pamic@luka-kp.si

prague.office@luka-kp.si

M: +386 41 474 107