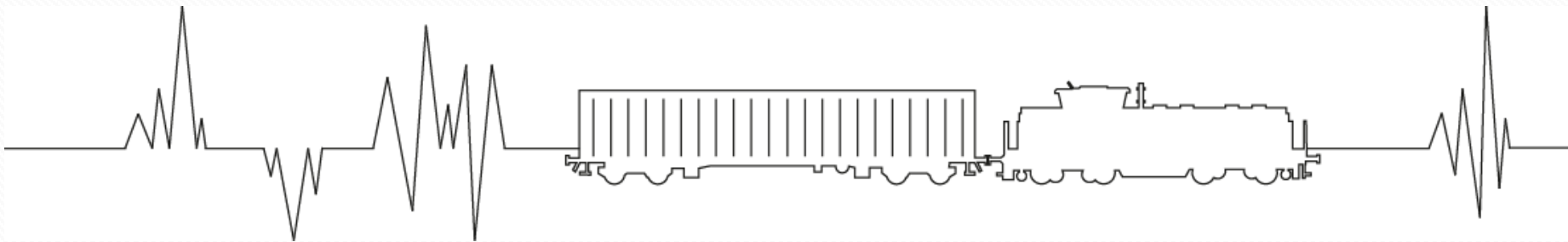




FAR EAST LAND BRIDGE LTD.

HEARTBEAT OF LOGISTICS



www.felb.world

WHY RAIL : RAIL IS FUTURE

Since 2014 China is investing trillions of dollars in railway infrastructure as well as rail transit construction. By the year 2020 China will expand the railway lines including 30,000km of high speed rail.

The running time of the Silk Road's express rails are reduced to 10-13 days from 16-18 days in the initial stage.

The importance of railway has already been recognized by large forwarding companies and is being developed. However, it is also of significant importance that the small/medium scaled transportation companies should integrate this service into their portfolio.

Railway transportation is a strong competitor of sea and air freight.

One belt, One Road: With the Silk Road initiative, China aims to build a "Global Infrastructure Network"



FACTS AND STATISTICS OVERVIEW



CONTAINER STOCK



- 4.900



TURNOVER



- 2014: 75.000.000 USD
- 2015: > 110.000.000 USD



VOLUMES



- 2014: EB/WB: 30.000 TEU
- 2015: 47.000 TEU

DEVELOPMENT



2007-2008

Project start/
Testing phase

2010

EB/WB weekly
departures

2012

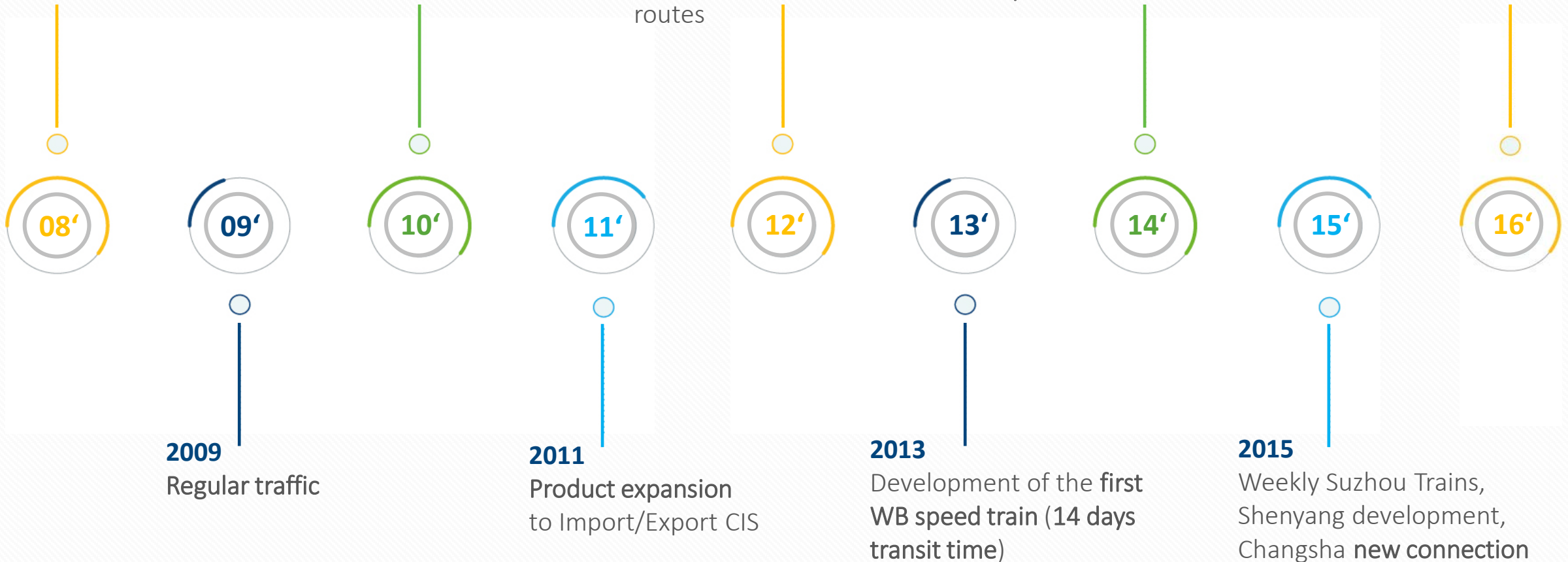
Multi departures in
both directions and
development of new
routes

2014

Start with LCL Service &
development of the first
EB speed train

2016

New LCL service route
from Hamburg to Suzhou
& Expansion to Italy





1. Eurasian Transit Trains

- 1.1. Westbound / standard service
- 1.2. Westbound /speed train
- 1.3. Routing to / from Japan & S.Korea
- 1.4. Eastbound / standard service



2. LCL Services

- 2.1. Westbound
- 2.2. Eastbound



3. CIS Import/Export

- From Europe / From Asia
- To Moscow



4. Project Transportation

1. EURASIAN SERVICE LINES



TRANSIT TIME: 14 – 18 DAYS



1.2. WESTBOUND / SPEED TRAIN



TRANSIT TIME 14-15 DAYS

Westbound > weekly departures
Eastbound > monthly departures



14-15 days

Suzhou to Warsaw / Hamburg / Duisburg

15-16 days

Shenyang to Warsaw / Hamburg / Duisburg

15-16 days

Changsha to Warsaw / Hamburg / Duisburg

1.3. ROUTING TO / FROM JAPAN & S.KOREA



Japan to Warszawa / Hamburg / Duisburg

- via Suzhou 19-22 days
- via Dalian 21-25 days

S.Korea to Warszawa / Hamburg / Duisburg

- via Yinkou 20-23 days
- via Vostochny 20-24 days

1.4. EASTBOUND / STANDARD SERVICE



ROUTING TRANSIT TIME

From Europe to China
From Europe to S. Korea and Japan

16-17 days
21-25 days

EUROPE:

- Hamburg
- Duisburg
- Warsaw

CHINA:

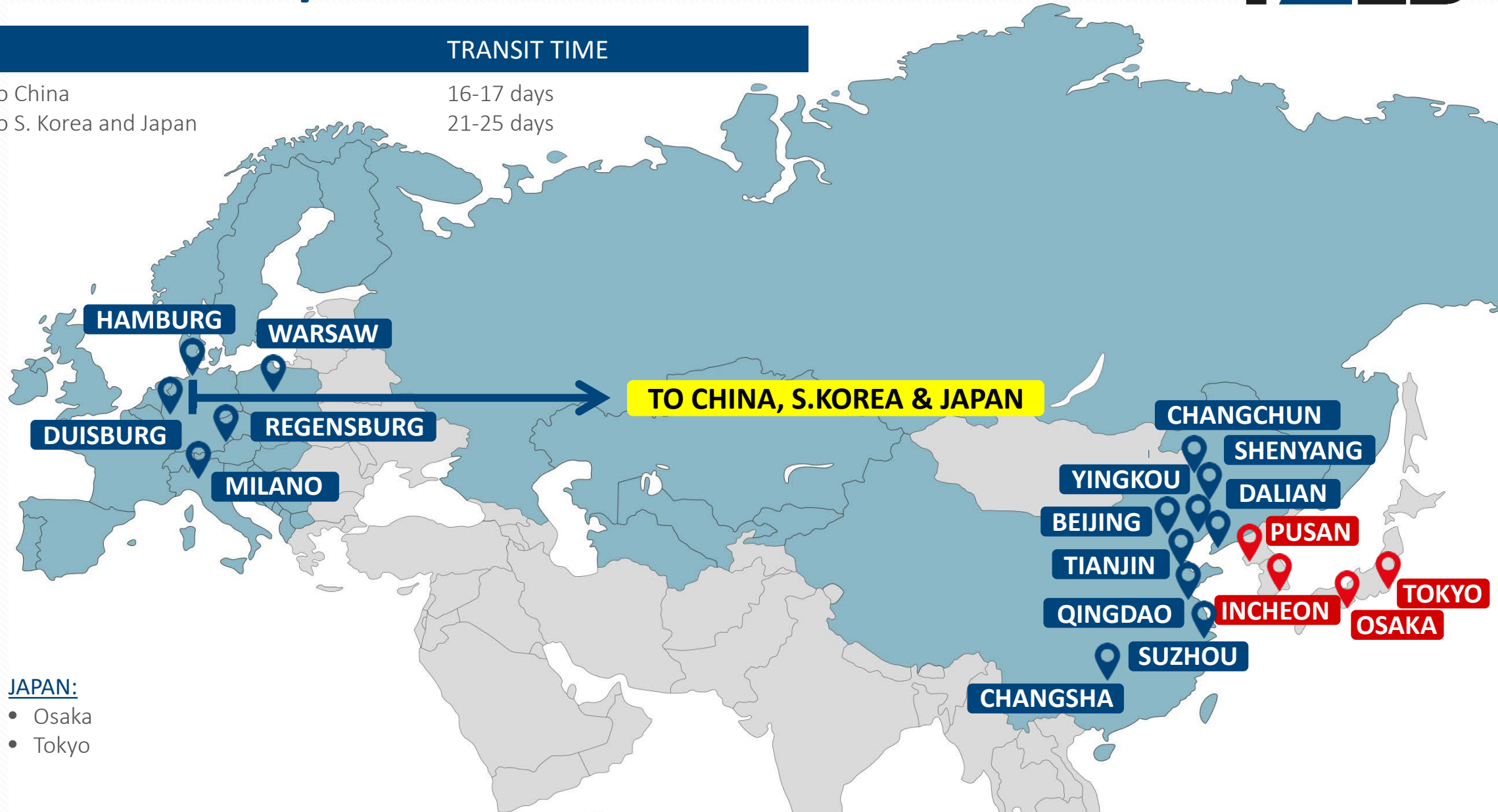
- Chongqing
- Changsha
- Qingdao
- Tianjin
- Beijing
- Yingkou
- Dalian
- Shenyang
- Changchun

S. KOREA:

- Pusan
- Incheon

JAPAN:

- Osaka
- Tokyo



2.1. LCL WESTBOUND



Dedicated LCL container open for clients with palletized cargo even for small shipments under 1 CBM



OUR SERVICE LINES:

- Suzhou – Warsaw 14 days
- Suzhou – Hamburg 16 days
- Suzhou - Moscow 13-14 days
- Suzhou - Olomouc 16-17 days
- Shenyang – Hamburg 17-18 days
- Incheon – Warsaw 23 days

Day of Departure:
every Friday

Day of Departure:
every Saturday

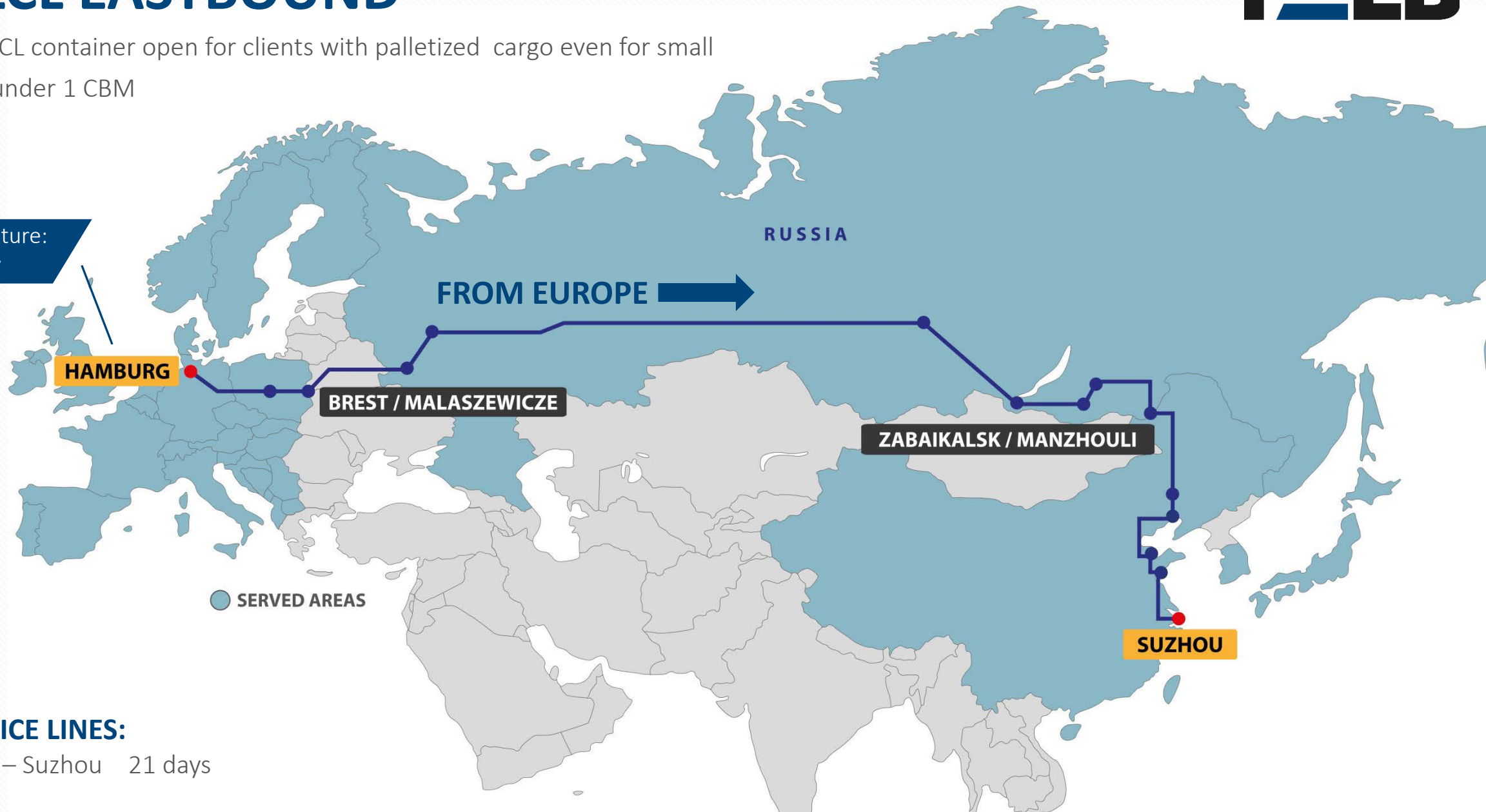
Day of Departure:
every Sunday

2.2. LCL EASTBOUND



Dedicated LCL container open for clients with palletized cargo even for small shipments under 1 CBM

Day of Depature:
every Friday



OUR SERVICE LINES:

- Hamburg – Suzhou 21 days

3. CIS SERVICES



FROM EUROPE – 40FT HC COC AND 20FT HC COC



FROM ASIA – 40FT HC COC AND 20FT HC COC



FROM CHINA TO CIS



FROM SUZHOU TO MOSCOW



Our CIS service offers destinations in Russia, Kazakhstan, Uzbekistan, Turkmenistan and Kirgistan.

3.1. CIS SERVICES

TO MOSCOW



Day of Depature:

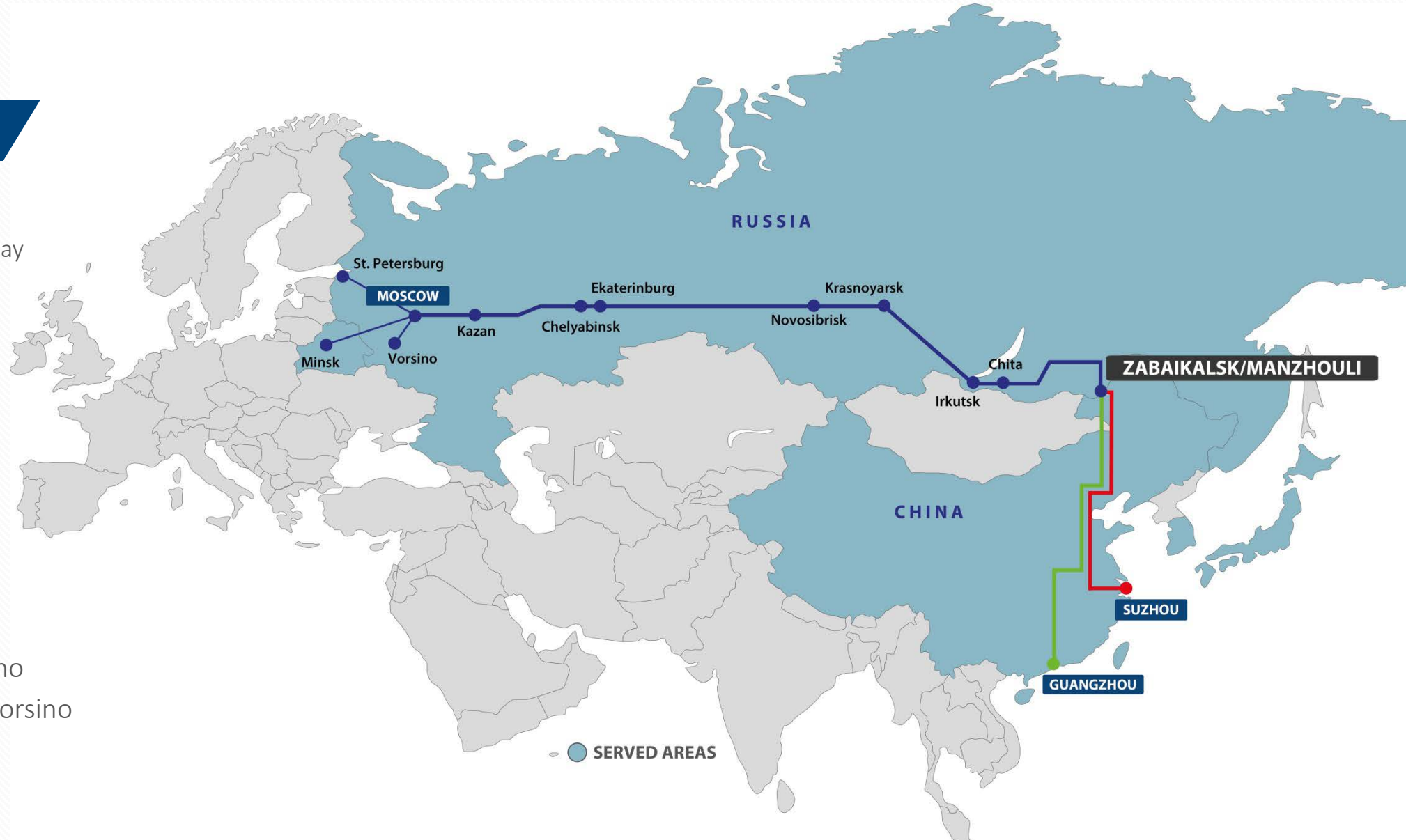
- FCL
- Suzhou: every Saturday
 - Guangzhou: every Saturday
- LCL
- Suzhou: every Sunday

Duration:

14 – 16 days

Routes:

- FOR Suzhou – FOR Vorsino
- FOR Guangzhou – FOR Vorsino



4. PROJECT TRANSPORT

ROLLING-STOCK TRANSPORTATIONS

Including rail construction machines, locomotives, high speed trains, EMUs/DMUs (electric-/diesel multiple units), new & used passenger & cargo wagons, trams & metros

HEAVY AND OVERSIZED CARGO

From pickup to delivery

ADDITIONAL SERVICES

- Organizing of permissions
(Client has to provide all necessary technical data)
- Security to accompany the transport
- Taking care of documents
- Immediate reports of exceptional circumstances
- Full range of logistic services
- Daily tracing
- Door-to-door service
- Additional GPS if needed
- 24/7 availability during the transport



Daily tracing



Door-to-door service



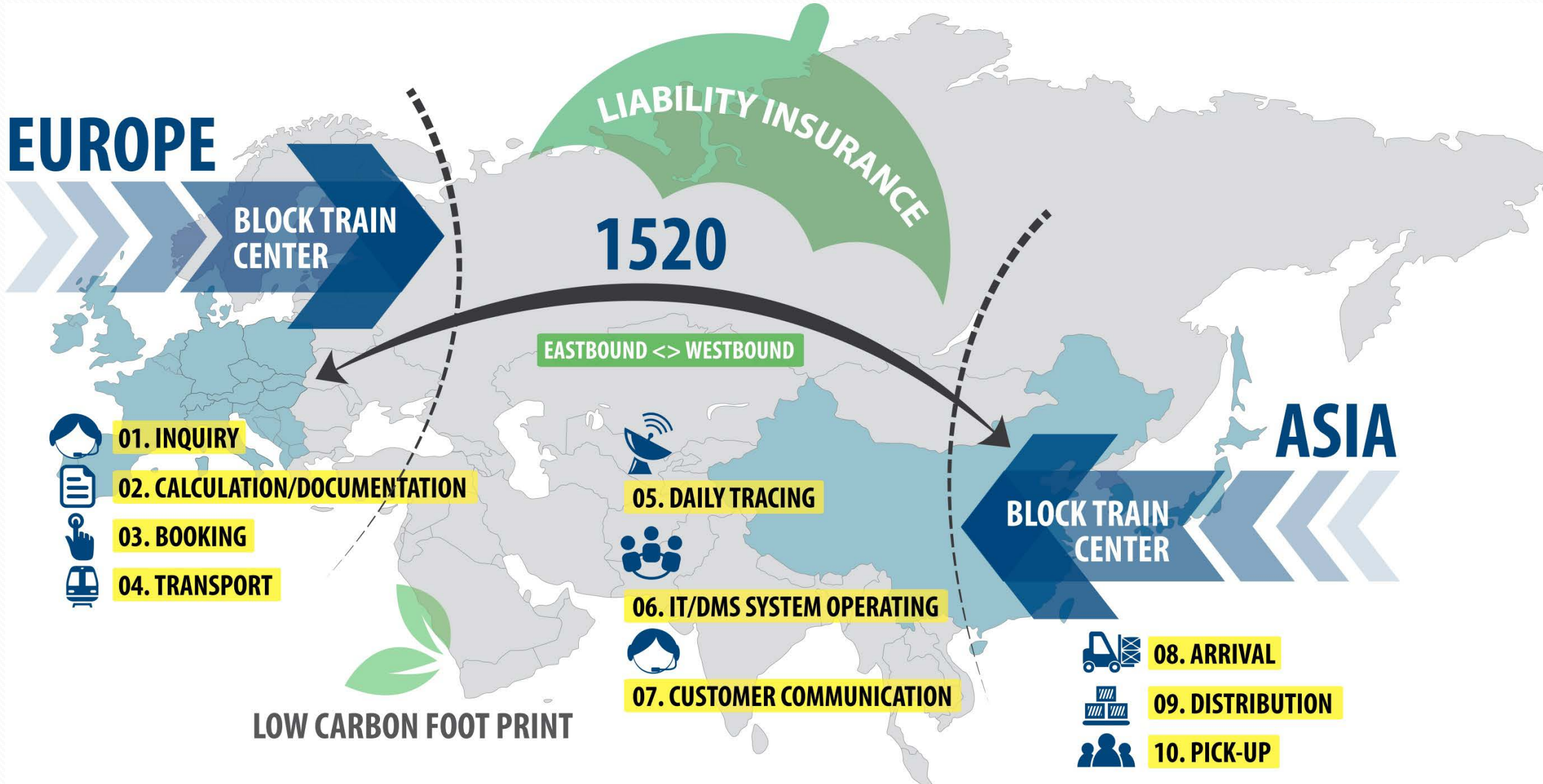
Environment-friendly



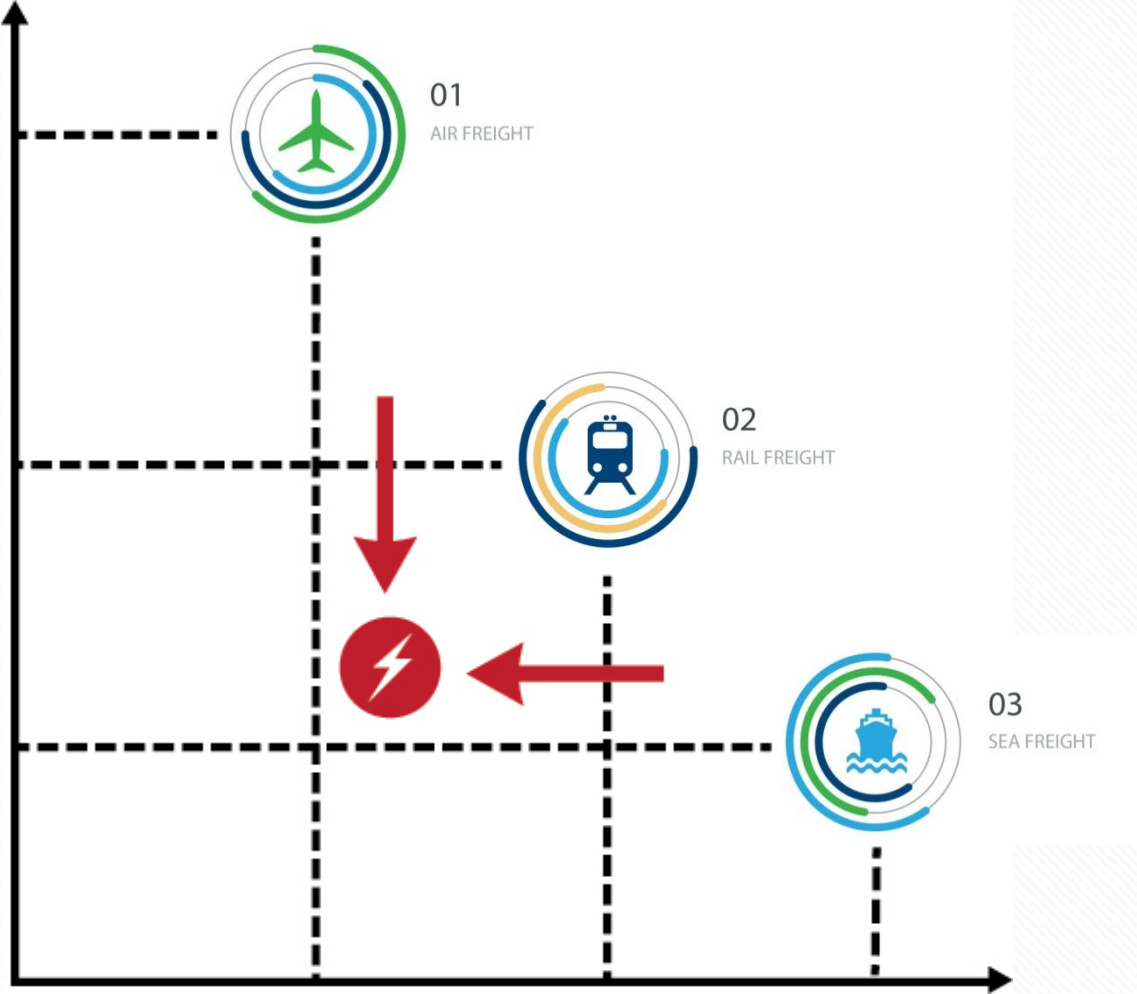
Customer orientation



NATURE OF BUSINESS AND MAIN PROCESS



ADVANTAGES AND COMPARISON



FELB'S RAIL SERVICE IS THE PERFECT BLEND OF SPEED AND COST FOR EFFICIENT LOGISTICS



TRACING

Daily information of container position



LIABILITY INSURANCE

Covering high value cargo up to \$15.000.000

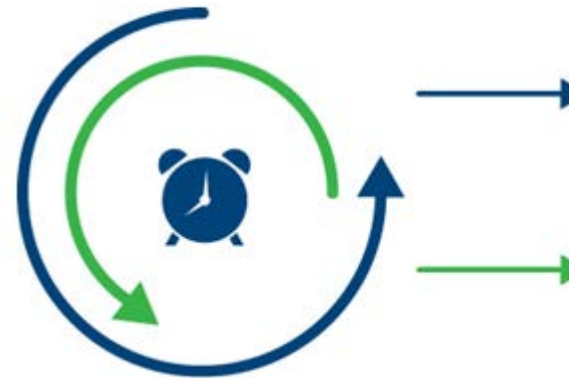


DOCUMENTATION

Compact electronic documentation system based on a unique railway bill & cargo manifest

ECONOMIC ADVANTAGE

BENEFITS GAINED FROM A **SHORT TRANSIT TIME**



WORKING CAPITAL

Short-term capital commitment

INTERESTS

Small losses of commercial interests

ECOLOGICAL ADVANTAGE

LOW CARBON FOOTPRINT

SHORT PRE/ON-CARRIAGE DISTANCE

LOW CO2 EMISSION

WHY FELB ?



Since 2007 we have positioned ourselves to work exclusively with forwarding companies.

During this time we have gained a lot of experience and a sustainable position in the logistics market, owning a neutral position of working exclusively with forwarding companies.



FASTER THAN SEA FREIGHT
CHEAPER THAN AIR FREIGHT



- We support your company to integrate the railing service and enlarge your service portfolio by offering an alternative to sea and air freight.
- Environmental-friendly transportation – aligned with the objective to decrease carbon dioxide emissions – future way of transporting goods.
- Be ahead of your competitors by integrating new logistic solution in your portfolio.
- FELB also organizes workshops, training and accompanies the customers to the important business meetings.
- Flexible solutions are offered which are tailored according to the wishes of the customers.



FAR EAST LAND BRIDGE LTD.

Administration Office:

Rivergate Handelskai 92, GATE 2/3.0G/TOP G,
A-1200 Vienna

Telephone: +43 (1) 890 63 39 0

Fax: +43 (1) 890 63 39 63

Email: sales@felb.world

URL: www.felb.world

RZD Logistics